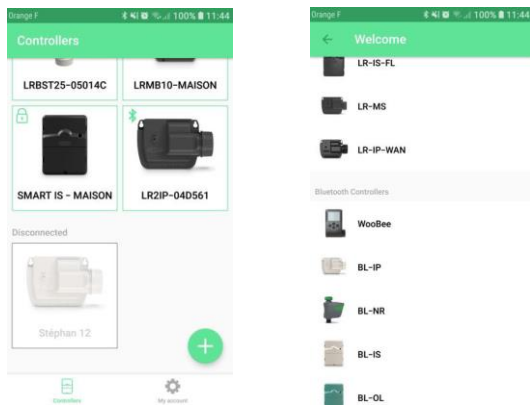


SECURITY KEY: HOW TO CHANGE OR ERASE THE BLUETOOTH SECURITY KEY OF A PRODUCT?

In order to remove the security key, please follow the following procedure:

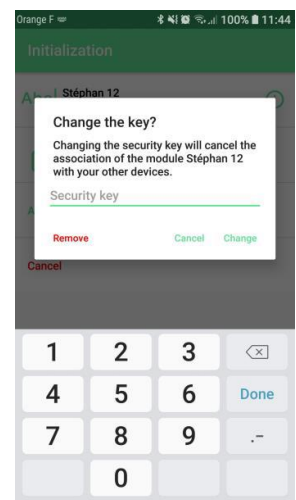
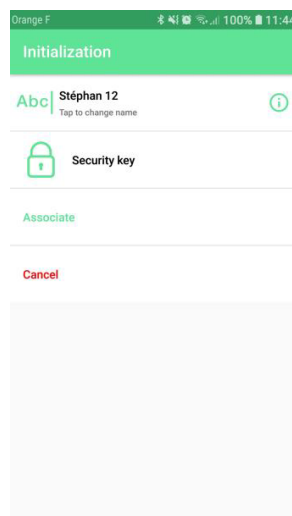
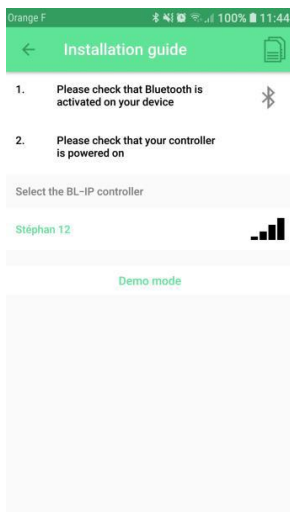
- Remove the battery of your controller
- Make contact into both plug of the battery with a screwdriver or with the big pole of the battery for 30 seconds.
- Reconnect the battery, your device is now in “association mode” for 2 min.
- On Mysolem Application:

select “+” add a controller, then on the list of products you can select the module you have.



NB: the programming of your product will be saved into the device.

- The default name of your product will appear **in green**. It means your device is in “**association mode**”. Select it and associate it.
- On the new screen, you can select “**security key**”
- and now, you have the possibility to select “**remove**” written in red.



- Your product is now available